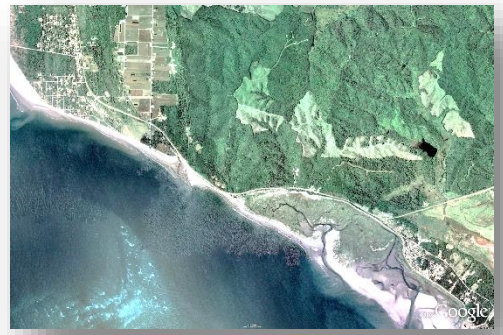


WeCan Community Engagement

AGENDA

Meeting: May 9, 2017 at 6:00 PM
Location: Shoalwater Community Center
 2373 Old Tokeland Road, Tokeland, WA



Time	Topics	Action	Leader
:05	Welcome & Introductions	Engage	Charlene Nelson Shoalwater Tribal Council
			Lisa Ayers Pacific County Commissioner District #3
:05	Agenda and Outcomes Review <ul style="list-style-type: none"> Recap: WeCan engagement since last community meeting (Nov 16, 2016) Focus: Collaboration for solutions 	Inform	Kelly Rupp LeadToResults, LLC
:20	SR105 Shoreline Maintenance and Repair Plan for Summer 2017		Colin Newell WA Dept of Transportation
:15	Shoalwater Bay Tribal Dune Restoration: Program Update		David Michalsen US Army Corps of Engineers
:15	Dynamic Revetment Project: Installation Report and Status		David Cottrell Grayland Drainage District #1
			Mike Nordin Pacific Conservation District
:15	Critical Area & Resource Lands (CARL) Erosion Hazard Area		Tim Crose Pacific County DCD
:30	Economic Impact Analysis: Project Update		Kevin Decker WA Sea Grant
:15	Initiatives update: <ul style="list-style-type: none"> Legislative Community Project (LCP) budget Continuing Authorization Program (CAP) proposal 		Lisa Ayers Pacific County Commissioner District #3
:05	Next Steps & Adjourn	Engage	Kelly



Contact Information:

Contact Email

WeCan@co.pacific.wa.us

Speakers

Charlene Nelson
Shoalwater Bay Tribe
cnelson@shoalwaterbay-nsn.gov

Lisa Ayers
Pacific County Commissioner District #3
layers@co.pacific.wa.us

Colin Newell
Washington Department of Transportation
NewellC@wsdot.wa.go

Tim Crose
Department of Community Development
tcrose@co.pacific.wa.us

Mike Nordin
Pacific Conservation District
plutroll@willapabay.org

David Cottrell
Grayland Drainage District #1
cranberrydavid@yahoo.com

Kevin Decker
Washington Sea Grant
kadecker@uw.edu

David Michalsen
U.S. Army Corps of Engineers
David.R.Michalsen@nwp01.usace.army.mil

Facilitator

Kelly Rupp
LeadToResults, LLC
kelly.rupp@leadtoresults.com